

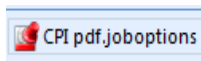
Building a Print Ready PDF:

Please build your art files to the following specifications:

- Include all high resolution images saved as CMYK at 300 dpi at the size they are being used in the document.
- If your document has images that bleed add 1/8" bleeds on all pages
- Add crop marks

Making the PDF:

1. When using "collect for output" ensure that you collect ALL fonts
2. When making a Print Ready PDF from In-Design, use the **CPIpdf.joboptions pre-set file***.



*Download this file from our website or ask us to email it to you

How to install and use the CPIpdf.joboptions preset file:

To install the pre-set:

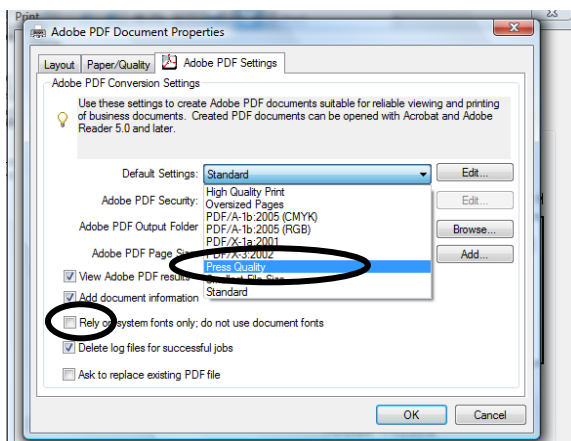
1. have Indd open
2. go to File
3. scroll to Adobe PDF Presets,
4. go to Define, go to Load.
5. At this point navigate to where the CPIpdf.joboptions file is located and choose it, then choose "Done".

To use the pre-set to create a print ready PDF:

When a project is ready for PDF creation (ensuring that you have created bleeds, crop marks and all high resolution images are in place). Under File, go to Export, give it a name and location to go to and choose PDF as its format and click **SAVE**.

In the top of the next window choose **CPIpdf**, choose one or all pages and click "EXPORT".

3. When making a Print ready PDF from another application choose "Press Quality" in the Adobe PDF Document Options menu and UNCHECK the "Rely on system fonts" box (see below).



Finally: Log onto insite.coastalprint.com and upload the PDF just created.